


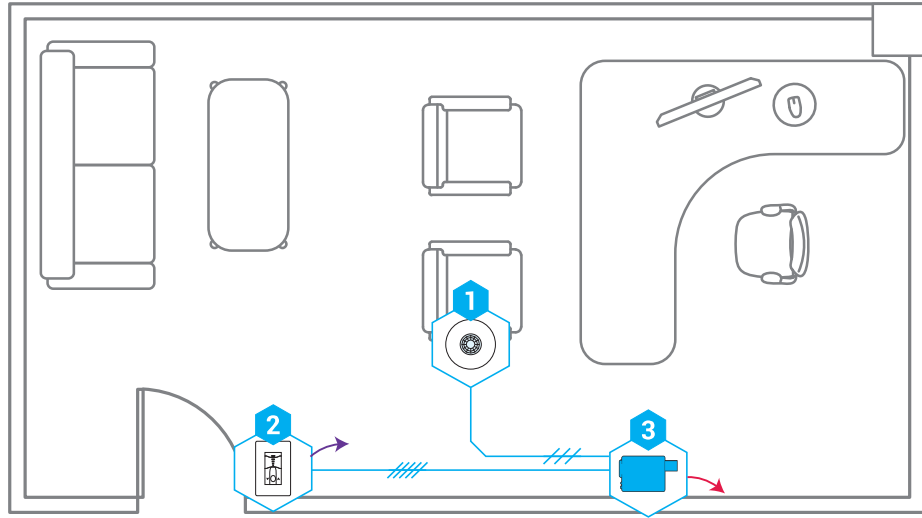




KEY

-  TO LINE VOLTAGE CONNECTIONS
-  TO 0-10V LIGHTING
-  LOW VOLTAGE WIRING (18 AWG)



BILL OF MATERIAL

DIAGRAM #	QTY	MODEL #	DESCRIPTION
1	1	SWX-221-1	Dual Technology (PIR/Acoustic) Occupancy Sensor, Small Motion, Ceiling Mount 360°
2	1	SWX-803-xx	Dimming Wall Station (0-10V), <xx = color>
3	1	SWX-900-AX	Power Pack Controller w/ Auxiliary Switch Input, 120/277 VAC

SEQUENCE OF OPERATION

1. Lighting switched on manually to last user level or automatically to 50% upon occupancy.
2. On/off & raise/lower control of lighting via dimmer switch.
3. Lighting automatically dims according to daylight contribution.
4. Lighting turns off automatically after occupants leave the space.

ADDITIONAL DESIGN CONSIDERATIONS

1. Alternative corner mount sensor model **SWX-421-1**.
2. Maximum lighting level can be task tuned to increase energy savings.
3. For rooms with windows, change sensor to **SWX-231-D** to add daylight harvesting.

SUPPORTED CODE REQUIREMENTS

Occupancy Sensor Control
C405.2.1 & C405.2.1.1(1)

Manual Control - Switch
C405.2.2.3

Daylight Responsive Control
C405.2.3**

Manual On-Off/Partial Auto On
C405.2.1.1(2)

Manual Light Reduction Control - Dimmer
C405.2.2.2*

*RECOMMENDED BUT NOT REQUIRED BY CODE.

**NOT REQUIRED FOR ROOMS WITH < 150W OF LIGHTING IN PRIMARY DAYLIGHT ZONE. SEE DESIGN CONSIDERATION #3 FOR NECESSARY BILL OF MATERIAL CHANGE.