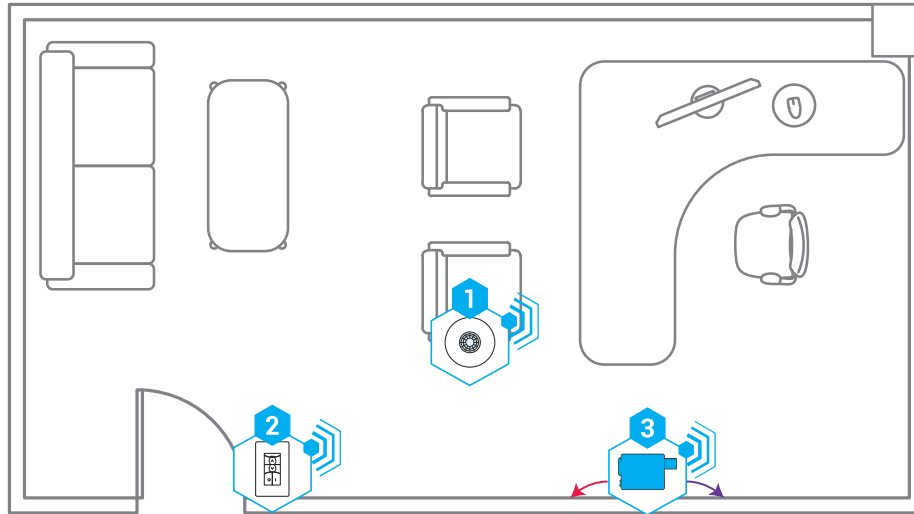










## WIRELESS



### KEY

-  TO LINE VOLTAGE CONNECTIONS
-  TO 0-10V LIGHTING
-  WIRELESS CONNECTION

## BILL OF MATERIAL

DIAGRAM #	QTY	MODEL #	DESCRIPTION
	1	<b>SWX-221-B</b>	Wireless Dual Technology (PIR/Acoustic) Occupancy Sensor, Small Motion, Ceiling Mount 360°
	1	<b>SWX-854-B-xx</b>	Wireless Dimming Remote Wall Station, <xx = color>
	1	<b>SWX-950-D2</b>	Wireless Power Pack Controller w/ Dimming (0-10V), 120/277 VAC

## SEQUENCE OF OPERATION

1. Lighting switched on manually to last user level or automatically to 50% upon occupancy.
2. On/off & raise/lower control of lighting via dimmer switch.
3. Lighting automatically dims according to daylight contribution.
4. Lighting turns off automatically after occupants leave the space.

## ADDITIONAL DESIGN CONSIDERATIONS

1. Alternative corner mount sensor model **SWX-421-B**.
2. Maximum lighting level can be task tuned to increase energy savings.
3. For rooms with windows, add a **SWX-250-B** daylight harvesting photocell.

## SUPPORTED CODE REQUIREMENTS

Occupancy Sensor Control  
**C405.2.1 & C405.2.1.1(1)**

Manual Control - Switch  
**C405.2.2.3**

Daylight Responsive Control  
**C405.2.3\*\***

Manual On-Off/Partial Auto On  
**C405.2.1.1(2)**

Manual Light Reduction Control - Dimmer  
**C405.2.2.2\***

\*RECOMMENDED BUT NOT REQUIRED BY CODE.

\*\*NOT REQUIRED FOR ROOMS WITH < 150W OF LIGHTING IN PRIMARY DAYLIGHT ZONE. SEE DESIGN CONSIDERATION #3 FOR NECESSARY BILL OF MATERIAL CHANGE.