

Conference Room

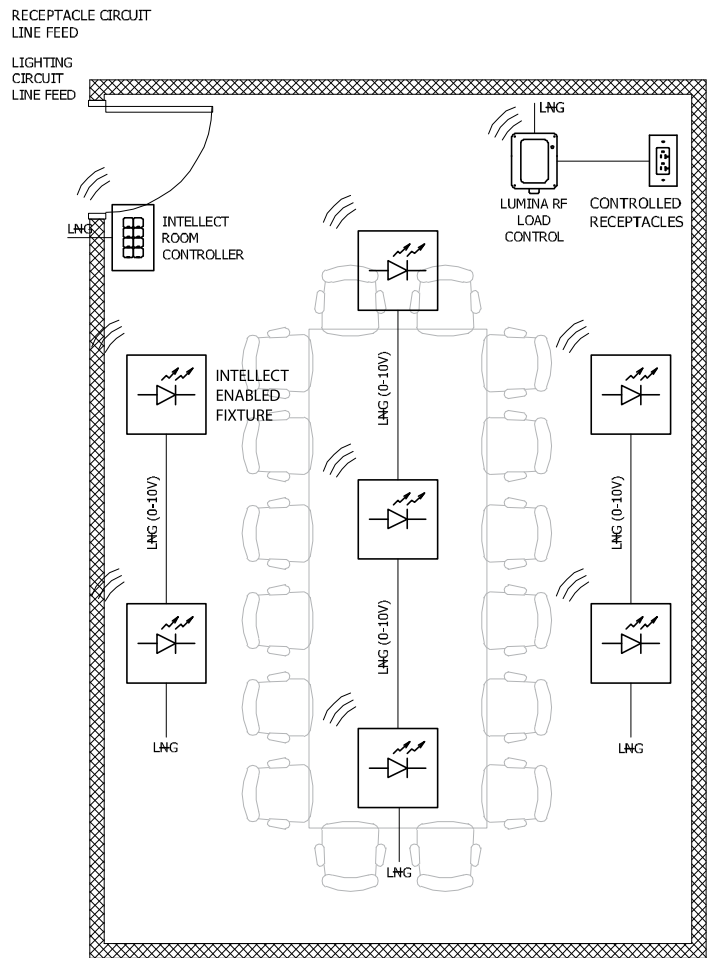
Intellect Distributed Fixture Control

Meets the Following Requirements:

- **Section C405.2.1.1**
- Interior Manual Lighting Controls
- **Section C405.2.1.2**
- Light Reduction Controls
- **Section C405.2.2.1**
- Automatic Time Switch Control
- **Section C405.2.2.2**
- Occupancy Sensors
- **Section C408.3**
- Functional Testing

Features:

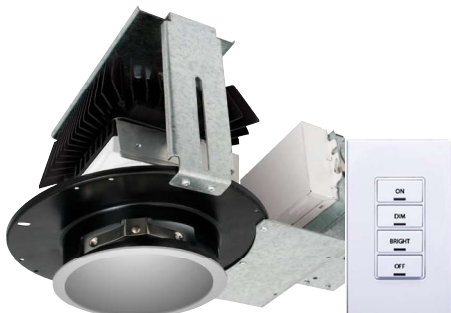
- 0-10V Dimming Control
- Vacancy or Occupancy Sensing with Auto-OFF
- Partial-ON, Partial-OFF
- Multi-Zone Daylight Harvesting
- Decora® 1-, 2-, 4-, or 8-button keypads
- Scene Control
- Demand Response
- Wireless Communication via Mesh Network



► FEATURED LEVITON IECC SOLUTION

Intellect Distributed Fixture Control

- Easy energy savings out-of-the-box
- Controls integrated in fixtures
- Compliant with DesignLights Consortium (DLC) Advanced Lighting Control specifications
- Wirelessly configure, control, and monitor the Intellect system using a Bluetooth app designed for an Android or iOS smart phone



List of Equipment

	Intellect-Enabled Fixture <i>Provided by others</i>	7
	Intellect Keypad, 8-Button ZLDNK-08W	4
	Lumina RF Load Control Module 73A00-3ZB	1
	Marked "Controlled" Receptacles 16352-2PW	5