

Common Area

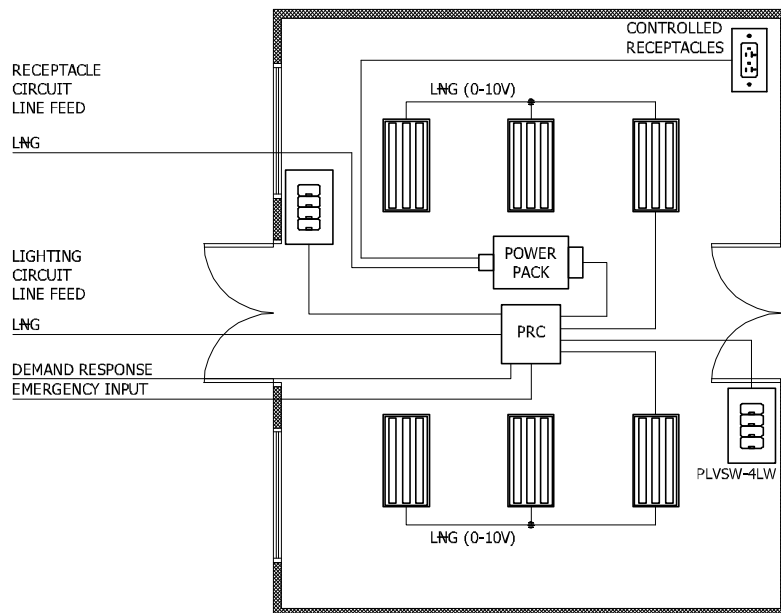
Provolt Room Controller (PRC)

Meets the Following Requirements:

- **Section C405.2.1.1**
- Interior Manual Lighting Controls
- **Section C405.2.1.2**
- Light Reduction Controls
- **Section C405.2.2.1**
- Automatic Time Switch Control
- **Section C405.2.2.2**
- Occupancy Sensors
- **Section C405.2.2.3**
- Daylight Zone Control
- **Section C408.3**
- Functional Testing
- **Section C405.2.3**
- Daylight Responsive Controls

Features:

- 0-10V Dimming Control
- Self-contained occupancy sensor, photocell and power pack
- Vacancy or Occupancy Sensing with Auto-OFF
- Auto Calibration
- Daylighting Set Point Adjustment through Entry Station
- Emergency Input
- Decora® 4-Button Entry Station
- Plug Load Control
- Time Clock Input
- Demand Response



► FEATURED LEVITON IECC SOLUTION

Provolt Room Controller (PRC)

- Comprehensive solution integrates multiple lighting control strategies—occupancy sensing, 0-10V dimming, daylight harvesting, partial-ON, partial-OFF and demand response
- Combined line voltage multi-technology or PIR sensor, power pack and photocell in a self-contained, easy-to-install compact device
- Configure and test controls from an Android or Apple smart device via the Provolt Bluetooth Mobile App—reduces callbacks

List of Equipment		
	Provolt Room Controller (PRC) O5C04-IDW	1
	Provolt Low-Voltage Keypad, 4-Button PLVSW-4LW	2
	OPP20 Super Duty Power Pack OPP20-0D1	1
	Marked "Controlled" Receptacles 16352-2PW	5

