

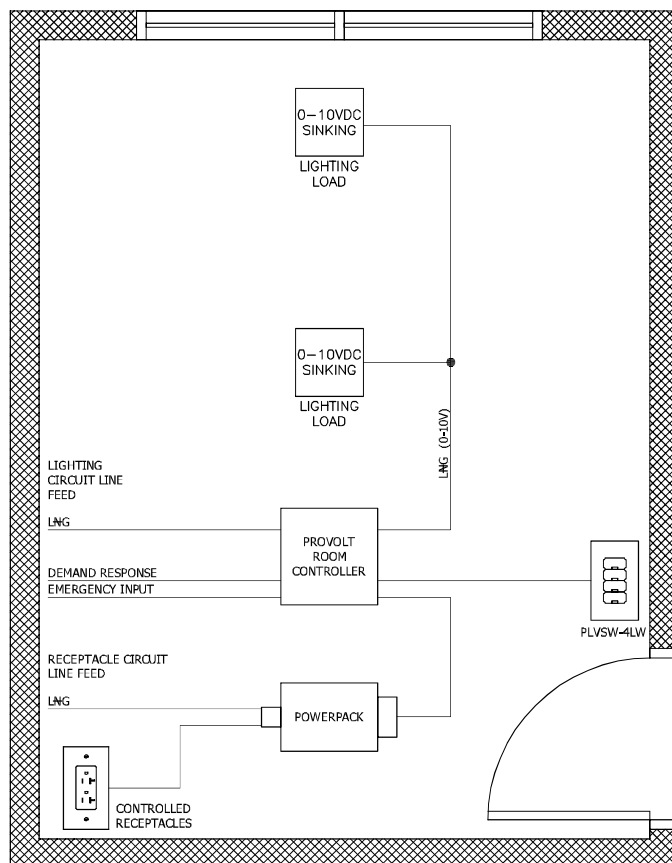
# Small Office—Single Zone Provolt Room Controller (PRC)

## Meets the Following Requirements:

- **Section C405.2.1.1**  
- Interior Manual Lighting Controls
- **Section C405.2.1.2**  
- Light Reduction Controls
- **Section C405.2.2.2**  
- Occupancy Sensors
- **Section C405.2.2.3**  
- Daylight Zone Control
- **Section C408.3**  
- Functional Testing
- **Section C405.2.3**  
- Daylight Responsive Controls

## Features:

- 0-10V Dimming Control
- Self-contained occupancy sensor, photocell and power pack
- Vacancy or Occupancy Sensing with Auto-OFF
- Auto Calibration
- Daylighting Set Point Adjustment through Entry Station
- Emergency Input
- Decora® 4-Button Entry Station
- Plug Load Control
- Time Clock Input
- Demand Response



## ► FEATURED LEVITON IECC SOLUTION

### Provolt Room Controller (PRC)

- Comprehensive solution integrates multiple lighting control strategies—occupancy sensing, 0-10V dimming, daylight harvesting, partial-ON, partial-OFF and demand response
- Combined line voltage multi-technology or PIR sensor, power pack and photocell in a self-contained, easy-to-install compact device
- Configure and test controls from an Android or Apple smart device via the Provolt Bluetooth Mobile App—reduces callbacks



## List of Equipment

	<b>Provolt Room Controller (PRC)</b> 05C04-IDW	1
	<b>Provolt Low-Voltage Keypad, 4-Button</b> PLVSW-4LW	1
	<b>OPP20 Super Duty Power Pack</b> OPP20-0D1	1
	<b>Marked "Controlled" Receptacles</b> 16352-2PW	5

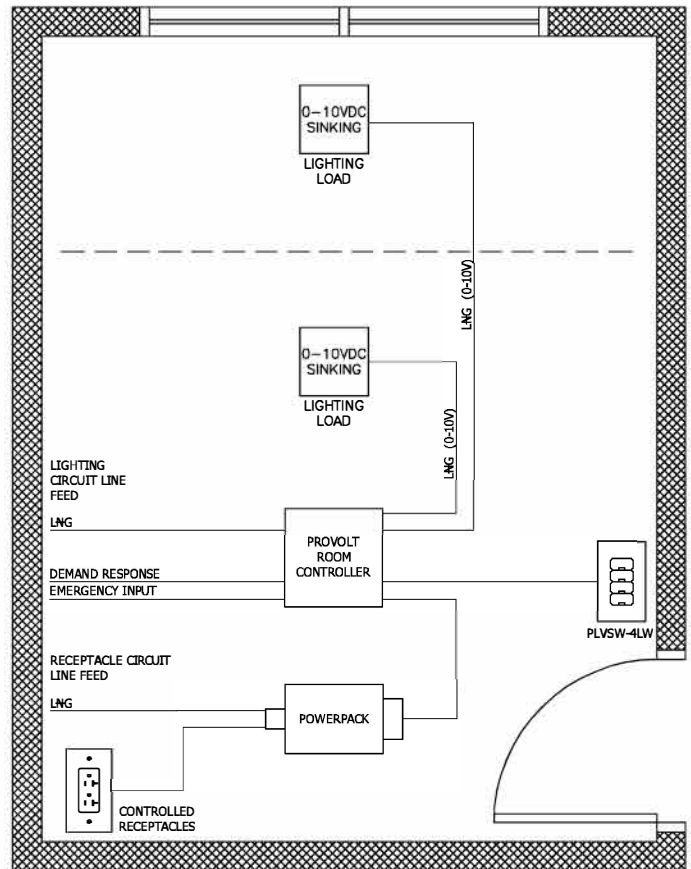
# Small Office—Dual Zone Provolt Room Controller (PRC)

## Meets the Following Requirements:

- **Section C405.2.1.1**  
- Interior Manual Lighting Controls
- **Section C405.2.1.2**  
- Light Reduction Controls
- **Section C405.2.2.2**  
- Occupancy Sensors
- **Section C405.2.2.3**  
- Daylight Zone Control
- **Section C408.3**  
- Functional Testing
- **Section C405.2.3**  
- Daylight Responsive Controls

## Features:

- 0-10V Dimming Control
- Self-contained occupancy sensor, photocell and power pack
- Vacancy or Occupancy Sensing with Auto-OFF
- Auto Calibration
- Daylighting Set Point Adjustment through Entry Station
- Emergency Input
- Decora® 4-Button Entry Station
- Plug Load Control
- Time Clock Input
- Demand Response







## ► FEATURED LEVITON IECC SOLUTION

### Provolt Room Controller (PRC)

- Comprehensive solution integrates multiple lighting control strategies—occupancy sensing, 0-10V dimming, daylight harvesting, partial-ON, partial-OFF and demand response
- Combined line voltage multi-technology or PIR sensor, power pack and photocell in a self-contained, easy-to-install compact device
- Configure and test controls from an Android or Apple smart device via the Provolt Bluetooth Mobile App—reduces callbacks



## List of Equipment

	<b>Provolt Room Controller (PRC)</b> O5C04-IDW	1
	<b>Provolt Low-Voltage Keypad, 4-Button</b> PLVSW-4LW	1
	<b>OPP20 Super Duty Power Pack</b> OPP20-0D1	1
	<b>Marked "Controlled" Receptacles</b> 16352-2PW	5